

Thread fastening robot

NEW

Delivering “fast takt time” for thread fastening operations.



[Automatically create thread fastening programs “easily”]

Equipped with thread fastening support software **MuDRIVE™**

- ◆ Cuts down programming time
- ◆ Prevents mistakes

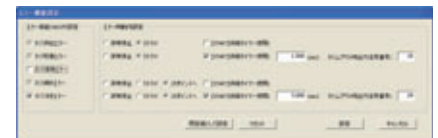
Step 1 Set thread fastening conditions Up to 5 different types of thread fastening conditions can be registered.

- Set the screwing speed and descending speed for temporary/full tightening.
- Can be simultaneously used with different screw types or as a backup feeder.



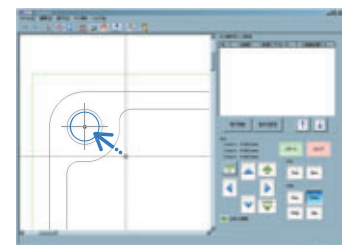
Step 2 Select operating pattern during errors Various error processing patterns are provided in advance. To set a pattern, just select it.

- When an error occurs, the robot can be set in advance to come to an emergency stop, retry or move to the next point.



Step 3 Set thread fastening points and their orders Settings can be set using a visual, intuitive process.

- Utilize workpiece DXF data as is.
- The snap function determines coordinates smoothly, simply by moving the cursor near the screw-tightening point.
- The thread fastening conditions and order can be changed easily, even after registering all coordinates.



- ▶ The program is created automatically after editing is complete. To finish, simply send the program to the robot.

Combinations

[Screw driver unit]

M1 to M2.3

Control torque: 0.02 to 0.35 N·m

M2 to M2.6

Control torque: 0.3 to 1.0 N·m

M3 to M4

Control torque: 0.8 to 2.0 N·m

[Screw feeder]



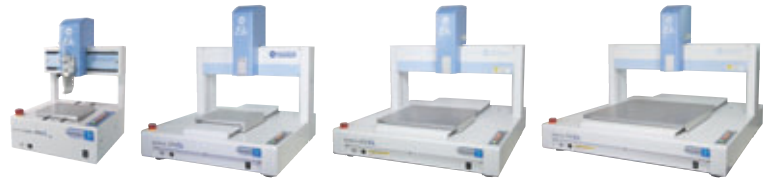
Applicable screw size:

M1.0, M1.2, M1.4, M1.7, M2.0, M2.3, M2.6, M3.0, M3.5, M4.0

Flexible power supply

[Base robot]

High-speed SHOTMASTER™ SX series



SM200SX-3A-Z

SM300SX-3A

SM400SX-3A

SM500SX-3A

High-precision, high-speed robot developed with cutting edge dispenser technology

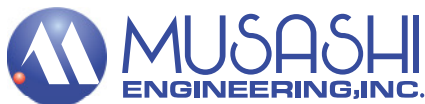
Specifications

Applicable screw size	Control torque (N·m)	Electric driver set	Screw feeder set
M1.0 M1.2 M1.4 M1.7 M2.0 M2.3	0.02 to 0.35	SMX-SDU-D5-SET	SMX-SDU-FDR-M1.0 SMX-SDU-FDR-M1.2 SMX-SDU-FDR-M1.4 SMX-SDU-FDR-M1.7 SMX-SDU-FDR-M2.0 SMX-SDU-FDR-M2.3
M2.0 M2.3 M2.6	0.3 to 1.0	SMX-SDU-D6-SET	SMX-SDU-FDR-M2.0 SMX-SDU-FDR-M2.3 SMX-SDU-FDR-M2.6
M3.0 M3.5 M4.0	0.8 to 2.0	SMX-SDU-D7-SET	SMX-SDU-FDR-M3.0 SMX-SDU-FDR-M3.5 SMX-SDU-FDR-M4.0

Thread fastening working area X×Y (mm)	Dimensions W×D×H (mm)	Weight (kg)	Base robot
145×200	511×301×528	24	SM200SX-3A-Z
245×300	587×570×590	47	SM300SX-3A
345×400	687×670×590	65	SM400SX-3A
445×500	787×770×590	76	SM500SX-3A

* The high-rigidity SMΩX series lineup is also available.

* The "high-mount-head 50 mm" type and "high-mount-head 100 mm" type lineup are also available.



World Leading Dispenser
MUSASHI ENGINEERING, INC.

HEAD OFFICE

8-7-4, Shimorenjaku, Mitaka, Tokyo, 181-0013, Japan TEL : (81)422-76-7111 / FAX : (81)422-76-7122

BRANCH

TOKYO, OSAKA, NAGOYA, SENDAI, FUKUOKA, SAITAMA, NAGANO, EAST-KANTO, AKITA, KANAZAWA

MUSASHI ENGINEERING, INC. is certified and registered according to ISO14001 ENVIRONMENTAL MANAGEMENT.



<http://www.musashi-engineering.co.jp/english/>

autorisierter Vertriebspartner für Deutschland

ATN Automatisierungstechnik Niemeier GmbH



Segelfliegerdamm 94-98
D-12487 Berlin, Germany

Tel.: ++49 30 565 9095-0
Fax: ++49 30 565 9095-60

mail: info@atn-berlin.de
web: www.atn-berlin.de