

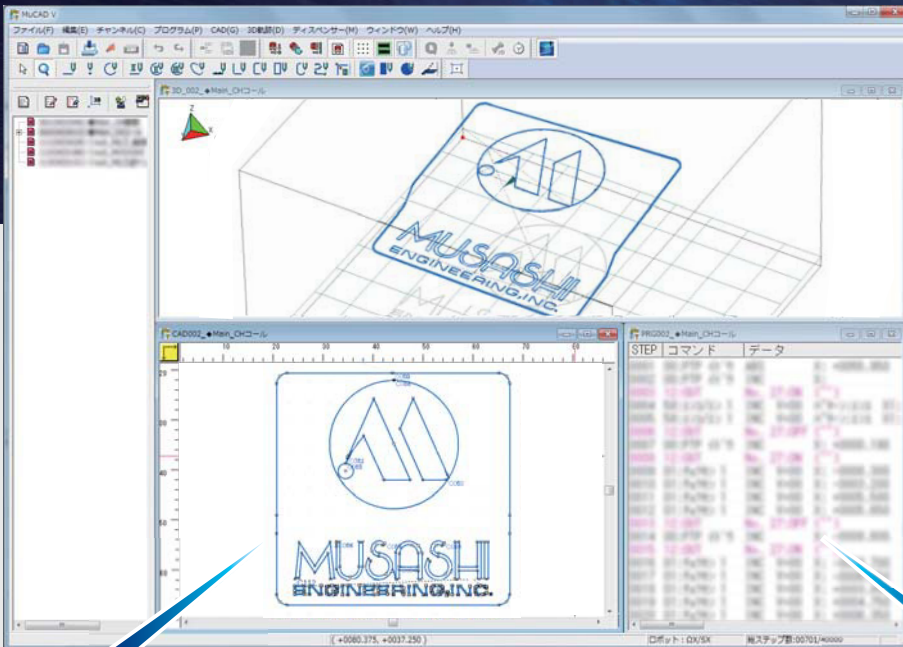
MuCADTM V

Concentration of **No.1**
dispensing know-how!

- Less editing time
- Intuitive drawing of dispensing patterns
- Easy editing for beginners



Windows 10 compatible
Japanese/English/Chinese/Korean/Thai/French



Dispensing example



Entry by drawing

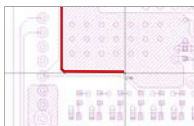
Use the mouse to create the "drawing" program to be dispensed



Line Spot Spline Fill Coating and more

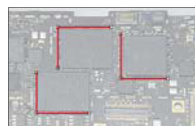
Load sketch

DXF/Gerber data



MuCAD drawing tool automatically snaps DXF, Gerber and other data as pattern data.

JPEG/BMP



Loading a photo of the work piece allows the dispensing pattern to be entered over the image.



Entry by command

Create accurate programs by entering values

Each operation step can be entered and verified. The dispensing order and timing can be configured in detail

Linked

New Function

Configure dispenser settings using MuCAD!



Added new MuCOM lite function.

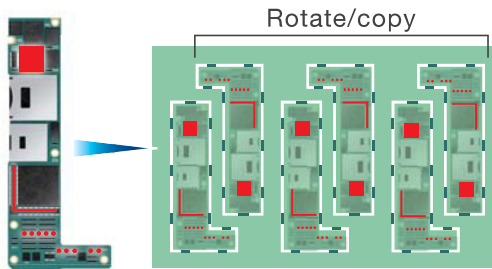
Dispenser parameters can be edited from the MuCAD screen.* The robot and dispenser can be controlled from the same software.

*Compatible dispensers
• MJET-4-CTR (AeroJet) • ROBO JET • SuperJet/SuperJet RM type

Useful functions to reduce editing time

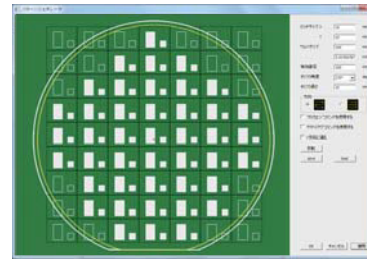
◆ Create staggered layout or multi-cavity programs

Works straight away with various work layouts. Includes "copy/rotate/flip" function for dispensing programs.



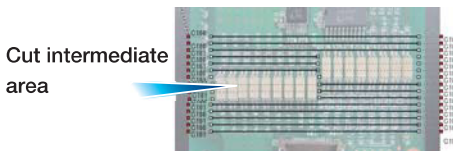
◆ Pattern generator function

Configure any device layout on wafers. Helps to reduce programming time significantly.



◆ Cut out dispensing prohibited areas

Includes cut intermediate dispense area function to separate dispensing into dispense areas and prohibited areas.



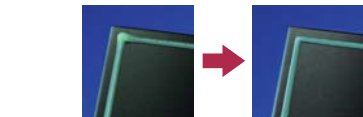
◆ Drawing by hand function

Programs can be created intuitively by hand (free line drawings).



◆ Synchro Speed™ function PAT.P

The line width can be maintained at constant even when moving through a corner. Reduces takt as much as possible.

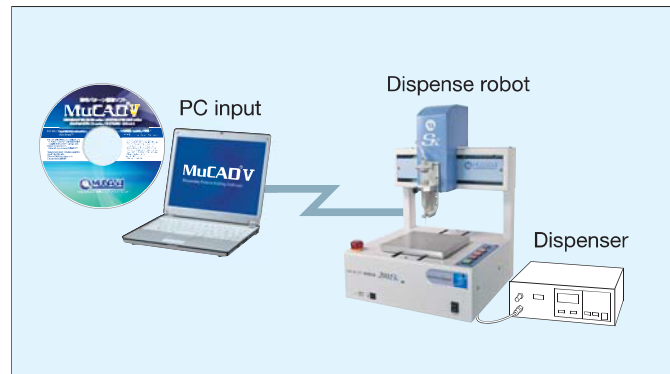


System requirements

OS	Windows 10, Windows 8.1, Windows 7
CPU	Pentium 4 2 GHz equivalent or faster
Memory	512 MB or more (1 GB or more recommended)
Display	XGA (1024x768) or higher resolution
Hard disk	Free space of 100 MB or more
USB port	USB port x1 (SHOTMASTER QX/SX series, CROSSMASTER QX/SX series)
Serial port	Serial port x1 (SHOTMASTER DS/DSS series, other older models) • Separate serial port x1/unit required when connecting the dispenser. • USB serial converter can be used.
Applicable robots	SHOTMASTER QX/SX series, SHOTMASTER DS/DSS series, CROSSMASTER QX/SX series, also compatible with other older models

* This software is protected by the Copyright Act, and may not be copied or modified without prior consent of MUSASHI ENGINEERING, INC.

* Microsoft Windows is a registered trademark of Microsoft Corporation.
Copyright 2017 MUSASHI ENGINEERING, INC.



Safety precaution
Make sure to read the instruction manual before you use the unit, for your safety.

* We reserve the right to change the specifications without notice.
* All copyrights are retained by MUSASHI ENGINEERING. Reprinting, reproducing, and/or transmitting as electronic data in whole or in part these material without prior written permission is strictly prohibited.

MUSASHI ENGINEERING, INC. is certified and registered according to ISO 14001 ENVIRONMENTAL MANAGEMENT.



World Leading Dispenser
MUSASHI ENGINEERING, INC.

<http://www.musashi-engineering.co.jp/english/>

HEAD OFFICE
8-7-4, Shimorenjaku, Mitaka, Tokyo, 181-0013, Japan TEL : (81)422-76-7111 / FAX : (81)422-76-7122
BRANCH
TOKYO, OSAKA, NAGOYA, SENDAI, FUKUOKA, SAITAMA, NAGANO, EAST-KANTO, AKITA, KANAZAWA

autorisierter Vertriebspartner für Deutschland
ATN Automatisierungstechnik Niemeier GmbH



Segelfliegerdamm 94-98
D-12487 Berlin, Germany

Tel.: ++49 30 565 9095-0
Fax: ++49 30 565 9095-60

mail: info@atn-berlin.de
web: www.atn-berlin.de